



GreenTree Preparatory Academy

Middle School Sports

Congratulations to the middle school sports teams. Currently our middle school boys flag football is 5-0 and the girls basketball team is 4-1. The students exhibited excellent sportsmanship and the coaches Mr. Jackson and Ms. English are very proud of their Royals

Lead to Change

GPA juniors and seniors have the opportunity to participate in the Lead 2 Change program. **Lead2Change is a career-readiness organization that engages young people in leadership opportunities and equips them with essential tools to be successful in college, their career and the community.** Young people who experience our programs enter the post-secondary world confident and clear about their career interests and their position in the global workforce.

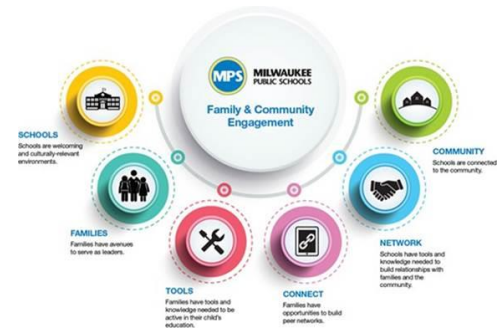
As part of a national movement, the Greater Milwaukee Foundation founded the Youth in Service Fund in 1996. The program was created workshops and paid internships, to engage young people in youth leadership and philanthropy. After many years



GPA Seven Skills for Success:

Collaborative Problem Solving, Critical Thinking, Effective Oral and Written Communication, Ethical Decision Making, Creativity, and Cultural Competency.

For Your Information



Our Roots Run Deep! Plant your Scholar at GreenTree Preparatory Academy and Watch how they GROW!

Attendance

All scholars are expected to be in attendance and on time daily for each class period. Students not in attendance will be marked absent. Please talk with our child and reiterate daily the importance of attending his/her classes daily. Students are not to attempt to go to their friends' classes. Thank you in advance for your support with this matter. Listed below is resource for attendance support.

https://www.attendanceworks.org/wp-content/uploads/2019/06/Attendance-Works-K-1st-Get-Ready_101321.pdf

**Voting
November 8, 2022**



**Important Dates
No student attendance:
November 8, 2022**

**Thanksgiving Break:
November 23-25, 2022**

Grades/Report Cards

Parents are able to view their child's grades and report cards online using the parent portal and infinite campus. If you have any questions, please contact Ms. Guizar, school counselor, at 414-206-0530.

Course Failure/Intervention

Course failure letters for high school and Possible Retention letter for middle school will be emailed to families this week. This information is a dipstick of the progress and growth of our academia. It is imperative that parents/guardians work with their child on completing all assignments and participating in class daily.

Effective Communication

Effective Communication is one of the skills necessary to be a successful citizen. This semester, GPA scholars will participate in the an all school writing assessment. The students in grades 6-12 will write to a specific prompt. Please be sure to talk with your child about doing their best on the assessment. -

All GPA Google Classroom

In the event your child is home for district related transportation issues or COVID-19 related absences, attendance will not be affected if your child attends online using the All GPA google classroom link. The link is <https://meet.google.com/looku-p/ferndrxwau?authuser=0&hs=179>.

GPA Shared Agreements

"At Green Tree Preparatory Academy, we value..."

...unconditional love, loyalty, honesty, creativity, confidence, compassion, and hope.

"At Green Tree Preparatory Academy, we are..."

...dynamic, inclusive, caring, focused, dedicated, thoughtful, genuine, and reflective.

We are Green Tree. Our roots run deep.

**TODAY'S STUDENTS. TOMORROW'S LEADERS.
Building a body of student leaders who will lead or own tomorrow's businesses.**



Website:
www.greentreeprep.org



Contact:
414-206-0500



Email:
454@milwaukee.k12.wi.us